

# Neverfail for Exchange

is the most comprehensive high availability, low cost software solution for Microsoft Exchange 2000/2003



From the Pony Express to Federal Express, snail mail to email, the drive in business has always been to communicate faster, more efficiently and more cost effectively. Once an innovation, email is now a business necessity. How much would it cost your company in lost productivity and revenue to go a day without Microsoft® Exchange? With Neverfail for Exchange, you'll never have to know.

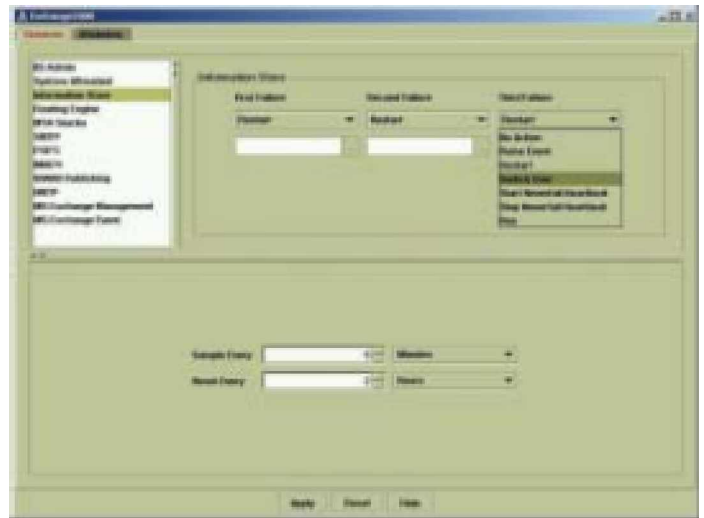
## **The heart and soul of Neverfail for Exchange – Neverfail Heartbeat**

The most important consideration in protecting your Microsoft Exchange environment is creating a real-time, duplicate copy of your Exchange data. Neverfail Heartbeat sits at the core of Neverfail's suite of affordable, "cluster-class" solutions, replicating data from your active to your passive server, whether they reside in the same server room, or across the globe.

## **Neverfail for Exchange is the only high availability solution that proactively monitors your entire Exchange environment**

Neverfail for Exchange proactively monitors the health of your physical server hardware, network infrastructure, operating system, and Microsoft Exchange application. If any problem occurs, Neverfail can take a variety of preemptive, corrective actions to resolve the issue without resorting to a full system fail-over. In extreme cases where the issue can not be resolved, a graceful switch-over to your secondary server can occur automatically, ensuring continuous Exchange availability.

In addition to protecting your Microsoft Exchange application, Neverfail can also protect auxiliary applications that you may have installed onto your server. These may include supporting applications such as anti-virus, backup, fax and archiving solutions. Our Application Module eXtension (AMX) technology provides an application program interface to easily and rapidly generate these extension products. Neverfail's existing library of AMXs is extensive; they are fully maintained and supported and remove the commercial concern and cost of "one-off" development practices on a critical server.



*Neverfail for Exchange monitors critical Microsoft Exchange services, and can take corrective action when problems arise.*

## **You'll only find switch-back capabilities in Neverfail for Exchange**

In addition to offering both manual and automatic switch-over capabilities, Neverfail for Exchange also features the ability to seamlessly switch-back, something replication solutions can't offer. Whether your primary server is down for several hours or even days, Neverfail will seamlessly resynchronize your servers when the primary does come back online, and allow you to switch your workload back to a normal production state within a few minutes by the simple click of a button!



## KEY FEATURES

### Dynamically identifies and includes specific application components

- Neverfail for Exchange intelligently discovers all application files, registry settings, services and databases associated with a specific application.
- Saves time, money and lowers risk by eliminating any customization or scripting required to support specific applications. Neverfail supports the Exchange application straight “out of the box.”

### Automatically monitors all key application services

- Automatically monitors the availability of all key services associated with a specific application.
- Improves availability by showing not only whether a server is available or not, but what is happening within the application.

### Monitors all key application performance attributes

- Monitors all key performance aspects of the operating system, hardware and application.
- Improves availability by identifying when overall performance begins to degrade.

### Preemptive fail-over avoidance

- Neverfail can take a variety of corrective actions to repair or resolve problems detected through its monitoring capability.
- Avoids expense of IT personnel involvement in managing unnecessary fail-overs.

### Seamless switch-over, fail-over and switch-back of application workload

- Automatically moves an application's workload back and forth between primary and secondary servers.
- Improves availability by providing seamless, non-disruptive application redundancy to users.

## SYSTEM REQUIREMENTS:

### Primary server requirements

- ◆◆◆ Microsoft Windows 2000 or 2003 compatible server with 2GB of free system hard disk space. This should not be spread over several drives.
- ◆◆◆ A minimum of 1GB RAM is recommended. Exact requirements depend on application load.
- ◆◆◆ Microsoft Windows 2000 Server or Advanced Server latest SP version, or Microsoft Windows 2003.
- ◆◆◆ Microsoft Exchange 2000 Standard or Enterprise latest SP version, or Microsoft Exchange 2003 Standard or Enterprise.

### Secondary server requirements

- ◆◆◆ Windows 2000 or 2003 compatible server with disk space and memory to match the Primary Server. Microsoft Windows 2000 or 2003 operating system with the same Service Pack applied as the Primary Server and same version of Exchange with the same Service Pack applied as the Primary Server.

### Network requirements

- ◆◆◆ 2 Network cards per machine (1 Public & 1 Channel) or 3 Network cards per machine (1 Public & 2 Channel).

### Licensing

- ◆◆◆ Neverfail Exchange is licensed based on the Server in a pair with the greatest number of CPU's.

## Reliability is the first and most crucial step to achieving high availability

The successful implementation and ongoing performance of any cluster-class high availability solution is predicated upon a reliable technology platform. Neverfail's Server Check Optimization Performance Evaluation (SCOPE) is the only automated software solution to deliver a comprehensive health “check-up” of your server environment. SCOPE identifies existing configuration and performance issues in your environment prior to installation of a high availability solution and it provides “snapshots” of your environment to ensure on-going reliability.

## Neverfail for Exchange Summary

Your business communications are too important to leave to back-up or replication. And why settle for a partial solution that focuses only on recovering hardware and data failures from a primary server when Neverfail for Exchange can deliver comprehensive, proactive failure protection for all elements of your server environment? Only Neverfail for Exchange can give you a cluster-class, high availability solution that's easy to install at approximately one tenth the cost of other cluster-class solutions.